

**1 11/16" DP Exposed Shaped Charge**

*Description*

1 11/16" DP Exposed Shaped Charge has temperature and pressure resistance and deep penetration for use in Exposed Strip Gun System Assembly. This type of Shaped Charges are individually sealed to protect against wellbore fluid.

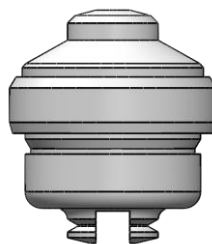
*Specification*

|                      |                       |
|----------------------|-----------------------|
| Part Number          | ESC1691431            |
| Explosive Type       | RDX                   |
| Pressure Rating      | 14000 psi             |
| Temperature Rating   | 330°F(166°C) / 1 Hour |
| Explosive Weight     | 8 gr                  |
| Depth of Penetration | 17.5 in (444.5 mm)    |
| Entrance Hole        | 0.24 in (6.1 mm)      |
| Length               | 1.67 in (42.6 mm)     |
| Diameter             | 1.43 in (36.5 mm)     |

*Packing Information*

|                           |                    |
|---------------------------|--------------------|
| Package (pcs)             | 50                 |
| Package Type              | Carton+ Vacuum Bag |
| Shaped Charge Weight (g)  | 124                |
| Dimensions of box (cm)    | 32.5x32.5x17.5     |
| Net Weight per box(Kg)    | 6.2                |
| Gross Weight per box (Kg) | 8.5                |

± 5 % Tolerance in weights.



Email: [sales@perfnix.com](mailto:sales@perfnix.com)  
 Website: [www.Perfnix.com](http://www.Perfnix.com)

Rev:00  
 Revised 2021