

1 11/16" SDP Exposed Shaped Charge

Description

1 11/16" SDP Exposed Shaped Charge has temperature and pressure resistance and super deep penetration for use in Exposed Strip Gun System Assembly. This type of Shaped Charges are individually sealed to protect against wellbore fluid.

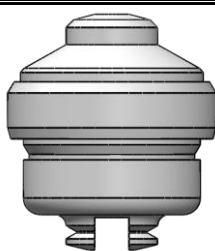
Specification

Part Number	ESC1691442
Explosive Type	HMX
Pressure Rating	14000 psi
Temperature Rating	365°F(185°C) / 1 Hour
Explosive Weight	8 gr
Depth of Penetration	23.8 in (604.5 mm)
Entrance Hole	0.21 in (5.33 mm)
Length	1.67 in (42.6 mm)
Diameter	1.43 in (36.5 mm)

Packing Information

Package (pcs)	50
Package Type	Carton+ Vacuum Bag
Shaped Charge Weight (g)	129
Dimensions of box (cm)	32.5x32.5x17.5
Net Weight per box(Kg)	6.45
Gross Weight per box (Kg)	8.8

± 5 % Tolerance in weights.



Email: sales@perfnix.com
Website: www.Perfnix.com

Rev:00
Revised 2021