

2 1/8" DP Exposed Shaped Charge

Description

2 1/8" DP Exposed Shaped Charge has temperature and pressure resistance and deep penetration for use in Exposed Strip Gun System Assembly. This type of Shaped Charges are individually sealed to protect against wellbore fluid.

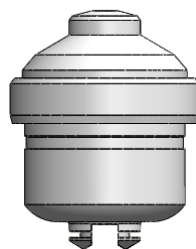
Specification

Part Number	ESC2121431
Explosive Type	RDX
Pressure Rating	14000 psi
Temperature Rating	330°F(166°C) / 1 Hour
Explosive Weight	13.8 gr
Depth of Penetration	23.3 in (592 mm)
Entrance Hole	0.35 in (8.9 mm)
Length	2.13 in (54.2 mm)
Diameter	1.67 in (42.5 mm)

Packing Information

Package (pcs)	50
Package Type	Carton+ Vacuum Bag
Shaped Charge Weight (g)	210
Dimensions of box (cm)	32.5x32.5x17.5
Net Weight per box(Kg)	10.5
Gross Weight per box (Kg)	12.6

± 5 % Tolerance in weights.



Email: sales@perfnix.com
 Website: www.Perfnix.com

Rev:00
 Revised 2021